

CERTIFICATE OF LOCATION OF GOVERNMENT CORNER

SOUTHEAST Corner of Section 6, Township 106, Range 43, 5th P.M.

STATE OF MINNESOTA, County of MURRAY

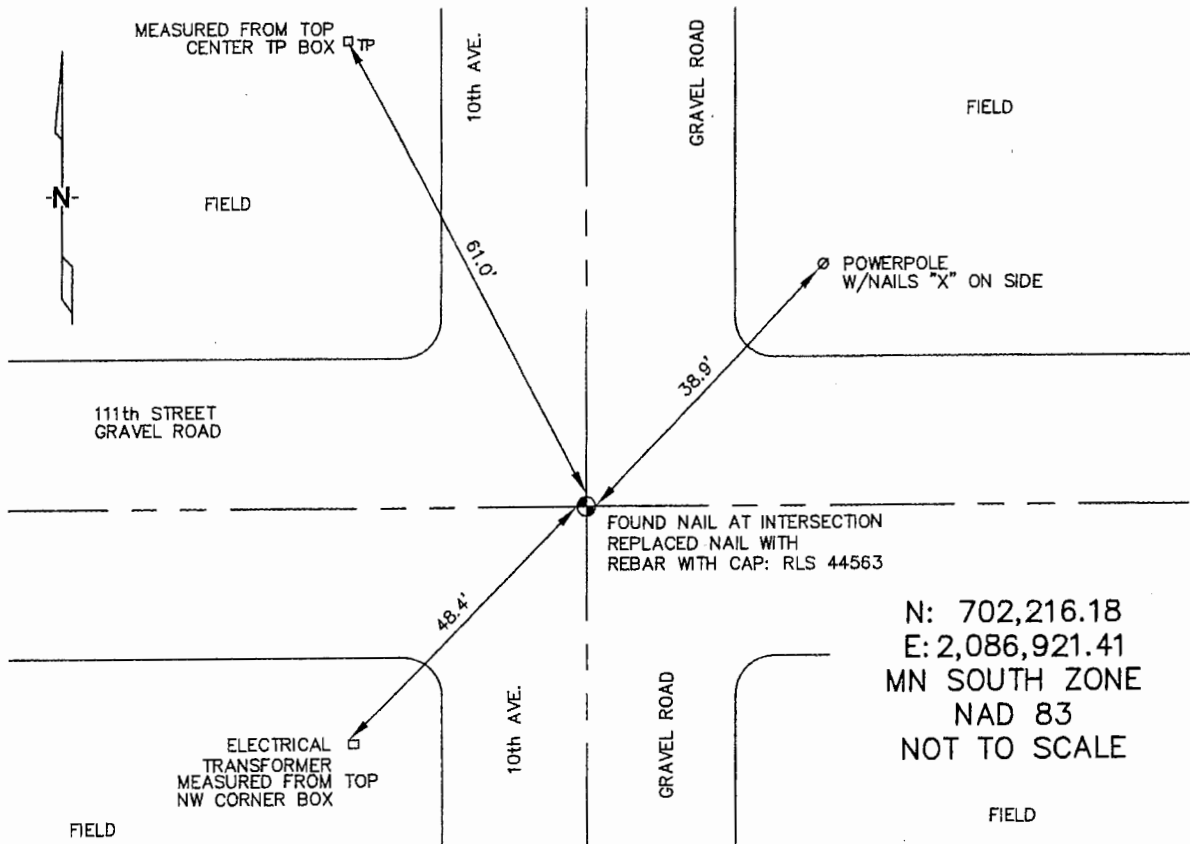
At the corner location shown on the sketch :

On 3/23/2006 found NAIL AT INTERSECTION.

left monument as found, lowered monument, removed monument (explain)

On 3/23/2006 set 5/8" REBAR WITH CAP: RLS 44563 AT INTERSECTION OF GRAVEL ROADS.

Sketch of reference ties



Statement of evidence relative to this corner location is on back page

I hereby certify that this document and the data contained herein was prepared by me or under my direct supervision.

Thomas V. Zeff 5/9/06
 Thomas V. Zeff Date

Registration No. 44563

- Land Surveyor, Professional Engineer
 County Surveyor, County Engineer

OFFICE OF THE COUNTY RECORDER

County of _____

SEP 28 2006

I hereby certify that this document was filed in the Co. Recorders office at _____ .M. on the _____ day of _____ A.D., 20

County Recorder James V. Johnson
 By _____, Deputy

DOCUMENT NO. _____

STATEMENT OF EVIDENCE:

SOUTHEAST CORNER, SECTION 6, T. 106 N., R. 43 W.,
MURRAY COUNTY, MINNESOTA

- 1866 J.W. Bishop, US. Deputy Surveyor, monumented corner.
- 3/23/2006 Ulteig Engineers, Inc., Survey Crew, Brian Payne Party Chief, found a nail at the intersection of the gravel roads.
Replaced nail with a rebar with cap: RLS 44563.
Ties: NW-61.0' to top, center telephone pedestal;
NE-38.9' to nailed "X" on south side of power pole;
SW-48.4' to northwest corner of most westerly electric transformer box;